

600496



2015



15

201,501,502,1103,1601-1615,1701-1716

www.sse.com.cn

					33.78	2014
12	31					
	2.38	2012	2013	2014		
					1.5	
	2012	2014				214,091.63
231,482.54		337,842.44			25.62%	2012 2014
					20,981.88	23,713.30
26,651.09			12.70%			
					AA	
AA						

2 2 2 2
- 6,25 . 6 - . , 6 5.





..... **6**

.....6

.....6

.....10

.....12

.....12

..... **14**

.....14

.....14

.....15

..... **17**

.....17

.....18

.....18

.....18

.....25

.....31

.....32

.....32

.....37

..... **44**

.....44

.....44

.....44

.....44

.....44

..... **46**

.....46

.....46

.....53

.....55

.....56

.....**58**

.....58

.....58

.....62

.....**63**





3

3

30

2

5

3

2015 7 29

2016 2020 7 29
1

2020 7 29
2018 7 29

2020 7 29

2020 7 29
2018

7 29

2020 7 29

1

2015 7 29 2020 7 28



AA

AA

AA

AA

2

5 7

1

15 201 501 502 1103
1601-1615 1701-1716

458 1702-04
021-68881513
021-68886005

2

19 15 01 11
6 19
010-56321861
010-56321800

968 23-25
021-52341668
021-52341670

61 4

1-1

19-20

0571-85800461

0571-85800465

1555 A 103 K 22

398

14

021-63501349

021-63610539

200001

15

201 501 502 1103

1601-1615 1701-1716

458

1702-04

021-68881513

021-68886005

12043401040005471

528

021-68808888

021-68804868

166

3

021-38874800

021-58754185





2015

AA

AA

AA

AA

1

2

3

1

2

3

4

5



1

2

“ ” “ ” “ ”

10

“ 2012 10 ” 2012 3
7 “11 ”

“11

”

AA

AA+

” 11

”

” 11

”

2012	AA+ AA
2013	AA AA+ AA
2014	AA AA

ChangJiang & JingGong Steel Building (Group) Co., Ltd.

340000000022295

71177404-5

151,044.52

151,044.52

1999 6 28

2002 6 5

600496

159

15

200233

021-31215599-6857

021-31215599-6870

www.600496.com

www.sse.com.cn

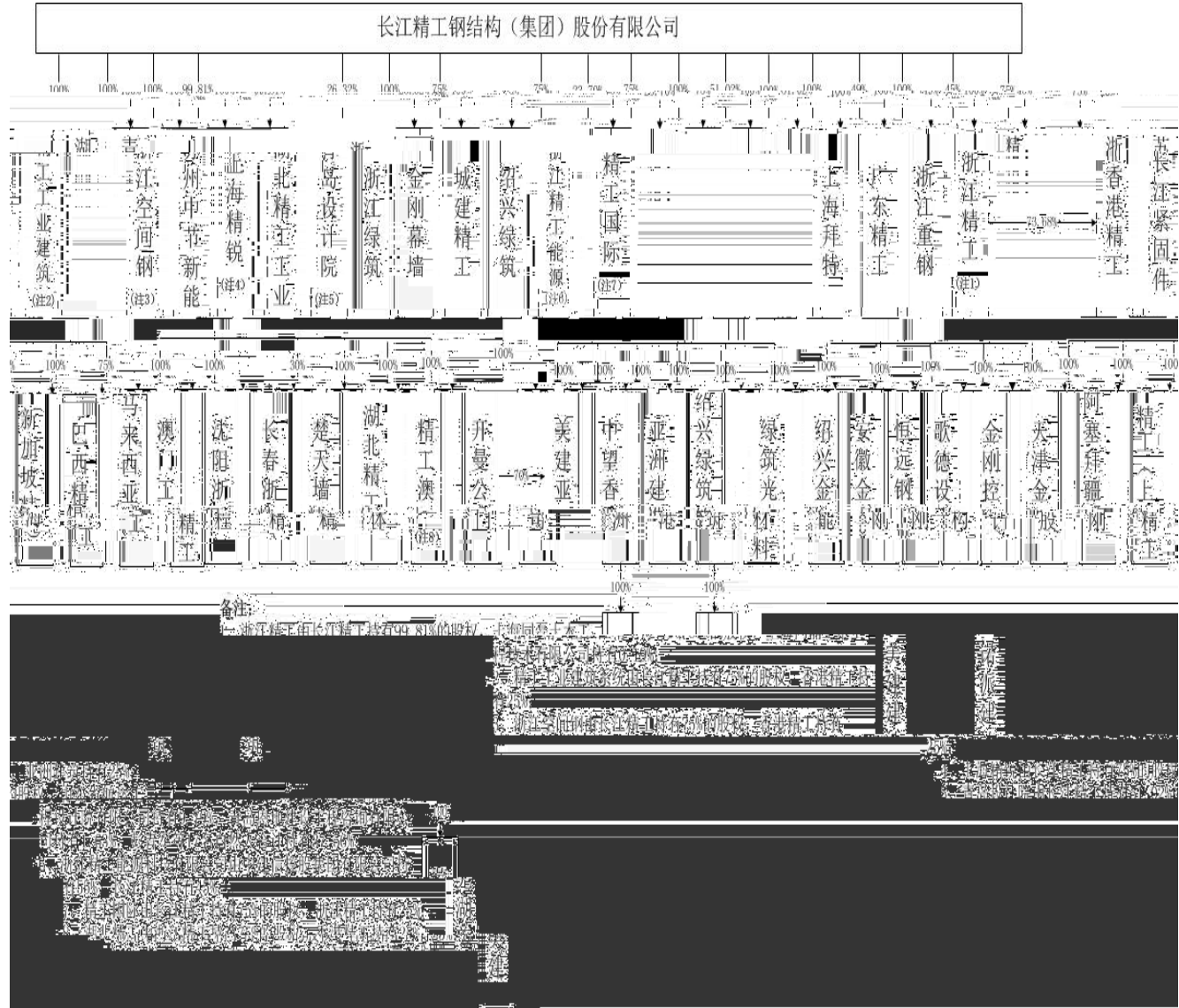
www.600496.com

E

2015 3 31 10

			%
1		195,940,729	28.54
2	1	24,674,556	3.59
3	3	20,000,000	2.91
4		19,900,978	2.90
5		19,546,098	2.85
6	3	15,000,000	2.18
7	1	13,998,574	2.04
8	99	12,307,692	1.79
9		10,000,000	1.46
10	<6 >	5,800,011	0.84
		337,168,638	49.11
		686,566,000	100.00

2015 3 31



							2014 12 31 /2014				
1		99.81%	1999.3.29			120,000	443,026.11	349,726.63	93,299.48	313,391.47	13,376.09
2			1994.5.6			1,100	109,993.44	71,699.37	38,294.07	112,775.71	7,373.42
3		75%	2004.3.24			3,900	35,441.70	19,339.01	16,102.69	28,996.86	4,166.31
		25%									
4		75%	2004.6.21			900	71,299.97	46,827.23	24,472.74	84,344.19	4,176.83

							2014 12 31 /2014				
		25%									
5		75%	2005.6.7			1,692.8	48,224.76	22,247.64	25,977.12	30,595.71	3,519.85
		25%									
6		100%	2005.9.1 2			15,000	127,398.6 8	96,122.00	31,276.68	87,656.89	2,911.16
7		75%	2004.6.1 6			550	17,272.56	11,444.33	5,828.23	29,440.29	376.74
		25%									
8		100%	2003.9.8			10,000	13,923.66	9,451.03	4,472.63	12,845.15	330.19

						2014 12 31 /2014					
9		100%	2004.8.4			1,500	6,092.21	4,149.02	1,943.18	3,552.34	281.34
10			2006.1.1 9			500	28,606.60	27,906.00	700.60	22,985.34	275.93
11			2009.11. 23			2,500	4,315.25	2,099.36	2,215.89	8,892.14	207.14
12			2003.10. 28		;	2,513	6,885.23	5,651.58	1,233.64	4,220.84	41.57
13		100%	2010.6.1 2			8,000	49,974.66	42,894.41	7,080.25	23,982.88	35.37

							2014 12 31 /2014				
14		100%	2002.1.9			5,000	4,272.84	720.19	3,552.65	172.14	-158.09
15		51.02%	2000.2.2 3			612.5	860.74	664.09	196.66	994.47	-475.24
16		100%	2014.3.6			10,000	8,259.24	964.12	7,295.12	0.03	-504.88
17		100%	2004.7.2 7			1,887.14	7,258.92	6,919.96	338.96	1,347.95	-1,102.97
18			2004.12. 28			500	13,817.07	12,821.52	995.55	7,468.04	-2,729.53

						2014 12 31 /2014				
19		100%	2007.2.9		8,000	32,828.69	30,715.86	2,112.83	22,587.97	-4,030.16
20		23.70%	2012.88			15,859.76	1.46	15,858.29	0.00	-337.83
21		49%	2004.8.1 3		2,000	13,597.74	11,069.04	2,528.70	16,970.80	279.14
22		45%	2014.2.1 1		50,000	55,014.09	549.16	49,522.54	6,686.20	-477.46

1

2015 3 31

19,594.0729

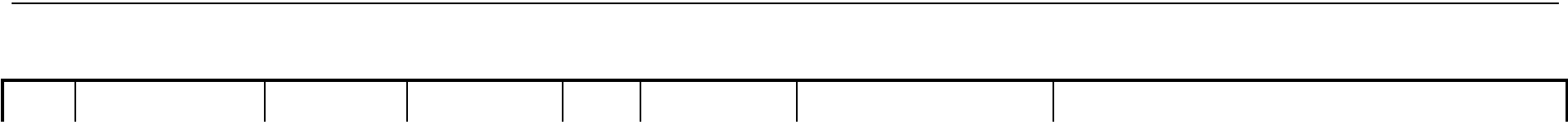
28.54%

	JingGong Holding Group Co.,Ltd
	32,000
	32,000
	2003 2 12
	www.jgsteelgroup.com
	51% 49%

2

2015 3 31

1		2008.7.28		10,000	100%	PE
2		2004.5.13		5,000	100%	



16.37% 43%
40.63%
23

1

1996.1.23

50,000

			2012.7.30-2015.7.30
			2012.7.30-2015.7.30
			2012.7.30-2015.7.30
			2012.7.30-2015.7.30
			2012.7.30-2015.7.30
			2012.7.30-2015.7.30
			2012.7.30-2015.7.30
			2012.7.30-2015.7.30
			2012.7.30-2015.7.30
			2012.7.30-2015.7.30
			2012.7.30-2015.7.30
			2012.7.30-2015.7.30

9			48,000

2011 3 100% 2012 1
100%

E

—

“ ” 101 “ ”

T3

2006 2013 8

6

2011 2013

2013		2012		2011	
1		1		1	
2		2		2	
3		3		3	
4		4		4	
5		5		5	

3

1

“

” “

” “

”

“

-

” “

” “

” “

” “

”

2

ISO9001 2008

“ 500 —

ERP ”

3

40

EMBA

760

6

115

8

2015 3

31

7163

8

95

2509

1464

252 /

4

“ ”

“ ”



“ ” “ ” “ ”

5



EPC

3-5

1-2-35

“

”

1

2

1

2

3

1

2

4

“ ”

1

	2014		2013		2012	
	679,953.50	99.35%	743,066.32	99.37%	604,588.76	99.33%
	4,457.46	0.65%	4,707.81	0.63%	4,086.27	0.67%
	684,410.95	100.00%	747,774.14	100%	608,675.03	100%
	246,579.82	36.03%	275,892.83	36.90%	257,630.70	42.33%

	127,042.70	18.56%	133,767.42	17.89%	113,200.40	18.60%
	179,963.48	26.29%	194,865.61	26.06%	140,204.25	23.03%
	126,367.49	18.46%	138,540.46	18.53%	93,553.41	15.37%
	4,457.46	0.65%	4,707.81	0.63%	4,086.27	0.67%
	684,410.95	100%	747,774.14	100%	608,675.03	100%

2

	2014		2013		2012	
	29,149.11	4.26%	31,754.61	4.25%	48,347.96	7.94%
	76,401.55	11.16%	70,441.36	9.42%	76,126.86	12.51%
	300,347.53	43.88%	328,075.13	43.87%	285,406.39	46.89%
	101,959.89	14.90%	106,693.42	14.27%	62,841.61	10.32%
	35,966.57	5.26%	42,444.82	5.68%	74,670.64	12.27%
	27,032.51	3.95%	46,582.96	6.23%	12,456.28	2.05%
	53,605.29	7.83%	44,201.32	5.91%	20,467.66	3.36%
	59,948.52	8.76%	77,580.52	10.37%	28,357.62	4.66%
	684,410.95	100.00%	747,774.14	100.00%	608,675.03	100.00%

1

/

/

2014			
	/		
1		22,486.00	3.27%
2		13,081.78	1.90%
3		10,378.72	1.51%
4		9,273.00	1.35%
5		8,465.67	1.23%
	5	63,685.17	9.25%
		684,410.95	100.00%
2013			
	/		
1		2,206	3.24%

2		2, 2 .	3.13%
3		22, 5 .	3.01%
4		, 65 . 7	2.49%
5		, 5 . 6	1.59%
5		100,709.06	13.47%
		747,774.14	100.00%
2012			
	/		
1		27,536.49	4.52%
2		13,566.57	2.23%
3		12,439.55	2.04%
4		12,156.29	2.00%
5		11,557.22	1.90%
5		77,256.13	12.69%
		608,675.03	100.00%

11.80%

2

“ ”

3

2014			
1		21,754.66	4.28%
2		18,328.71	3.61%
3		12,431.65	2.45%
4		9,023.94	1.78%
5		8,991.37	1.77%
5		70,530.34	13.88%

			CMBE-C-021	2014 3 -2017 3
6			JZ [2014]001137	2014 6 27 2017 6 27
			A244017218	2013 9 27 2018 9 27
			4400200600088	2012 8 28
7			B1084042011601-6/2	2013 4 17
			JZ [2014]009223	2014 2 20 2017 2 20
8			JZ [2012]000685	2012 12 6 2015 12 6
			B2084044068301-4/1	2013 12 16
9			JZ [2006]040372-2/2	2012 7 18 2015 7 17
			B1087033062101-6/4	2004 12 30
10			JZ 2010 040545-2/1	2013-10-11 2016-10-10
			B1084033062163-6/1	2012 11 6
11			JZ [2013]200405-01	2013-11-27 2016-11-27
			WB3085031011701	2008 12 17
12			JZ [2012]040537	2012-5-11 2015-5-11
			A3063031011205	2012 1 16
13			JZ 2005 040278	2014-1-14 2017-1-13

A144017211

2015 3 12

A137011547-6/3

2015 2 3

2014 12 31
 492,448.64 296,640.96
 195,807.68

2012 3 7 “11 ”
 “11 ” 2015 3 21 2015
 3 23
 “11 ”

6 2014 12 31
 33.78 17.76%
 40%

	2014	2013	2012
	1.25	1.27	1.32
	0.56	0.52	0.57
%	65.49%	72.40%	71.08%

	2.81	3.02	2.94
	100.00%	100.00%	100.00%
	100.00%	100.00%	100.00%

1 = /
 2 = - /
 3 = /
 4 = + /
 5 = /
 6 = /

2012 2013 2014

2012 12 31 2013 12 31 2014 12 31

2012 2013 2014

[2013]

610139

[2014] 610123

[2015] 610267

1

	2014 12 31	2013 12 31	2012 12 31
	103,494.20	69,422.83	55,757.84
	4,535.87	5,321.13	7,305.47
	175,999.36	162,095.82	145,469.24
	17,868.36	15,186.04	16,328.49
	235.20	137.20	-
	49,346.75	23,623.07	23,033.60
	426,052.19	394,854.85	323,207.60
	888.31	-	-
	778,420.24	670,640.95	571,102.24
	26,928.29	5,040.03	5,122.50
	73.36	2,431.20	2,160.25

	94,768.58	87,192.40	90,861.31
	197.80	2,402.02	3,185.92
	30,931.63	24,184.44	23,034.43
	40,462.12	40,462.12	40,462.12
	1,317.42	1,458.45	242.87
	5,666.55	4,849.73	4,176.68
	140.32	-	-
	200,486.06	168,020.38	169,246.07
	978,906.30	838,661.33	740,348.32
	136,789.00	144,400.00	87,200.00
	72,663.97	53,508.21	37,785.02
	223,092.60	208,250.08	191,375.58
	68,525.76	64,853.71	70,850.93
	7,392.22	6,048.41	5,228.51
	22,691.17	19,438.50	14,770.43
	3,730.86	3,767.21	3,679.43
	-	-	70.93
	15,561.32	12,420.64	12,485.59
	74,026.92	13,900.93	8,045.44
	624,473.83	526,587.69	431,491.86
	12,419.48	4,598.19	25,433.92
	-	69,577.30	69,231.30
	4,130.64	6,353.20	-
	39.91	62.41	99.60
	16,590.02	80,591.10	94,764.82
	641,063.85	607,178.79	526,256.68
()			
()	68,656.60	58,656.60	58,656.60
	115,046.72	41,910.72	42,485.53
	11,024.92	10,732.77	10,646.30
	143,364.98	119,938.87	98,658.30
	-1,006.09	-688.49	-367.15
	337,087.13	230,550.47	210,079.59
	755.31	932.07	4,012.05
	337,842.44	231,482.54	214,091.63
	978,906.30	838,661.33	740,348.32

	2014	2013	2012
	688,577.99	751,971.20	613,147.76
	688,577.99	751,971.20	613,147.76
	661,414.73	724,162.31	587,767.34
	574,380.67	636,993.58	515,243.98
	10,397.96	10,965.34	9,493.18
	12,427.64	12,580.53	13,029.75
	42,111.83	37,684.54	34,182.93
	16,070.76	13,032.45	13,677.44
	6,025.86	12,905.87	2,140.07
“ ”	-513.74	54.73	-783.84
	-513.74	54.73	46.16
“ ”	26,649.51	27,863.62	24,596.58
	5,151.85	1,883.50	1,619.08
	2,664.43	8.68	-
	312.33	841.22	471.21
	103.52	177.93	86.47
“ ”	31,489.03	28,905.90	25,744.45
	4,994.69	5,106.38	4,156.70
“ ”	26,494.34	23,799.52	21,587.75
	26,651.09	23,713.30	20,981.88
	-156.75	86.21	605.87
	-318.44	-321.34	-53.93
	-317.60	-321.34	-53.93
	-0.84	-	-
	26,175.91	23,478.17	21,533.82
	26,333.49	23,391.96	20,928.10
	-157.58	86.21	605.71
	0.44	0.4	0.36
	0.44	0.4	0.36

	2014	2013	2012
	610,502.83	546,956.83	475,370.36
	2,363.81	2,562.35	164.41
	16,550.28	17,771.52	15,539.18
	629,416.92	567,290.69	491,073.94
	500,020.35	452,126.43	425,380.99
	52,559.62	48,754.05	42,660.03
	27,107.80	26,597.53	23,950.33
	38,043.26	40,747.68	35,337.28
	617,731.03	568,225.69	527,328.62
	11,685.90	-934.99	-36,254.68
	-	-	-
	-	-	127.4
	4,343.39	223.11	103.29
	4,343.39	223.11	230.69
	18,804.37	6,746.20	14,720.36
	22,500.00	5,521.44	4,000.00
	-	-	21,188.39
	41,304.37	12,267.64	39,908.75
	-36,960.97	-12,044.53	-39,678.06
	83,136.00	-	-
	188,969.62	198,200.00	150,258.11
	-	-	70,000.00
	-	-	3,450.00
	272,105.62	198,200.00	223,708.11
	202,363.29	155,077.83	136,020.26
	21,419.65	16,286.41	13,669.84
	19.17	70.93	-
	-	-	1,037.50
	223,782.95	171,364.25	150,727.60
	48,322.67	26,835.75	72,980.50
	365.73	-169.23	203.14
	23,413.32	13,687.00	-2,749.10

	48,481.64	34,794.64	37,543.74
	71,894.96	48,481.64	34,794.64

1

	2014 12 31	2013 12 31	2012 12 31
	42,177.07	30,114.49	7,959.79
	123.00	514.00	130.00
	11,087.38	6,241.40	7,094.73
	1,730.39	5,001.71	1,274.12
	235.20	137.20	-
	108,007.64	90,969.99	97,992.12
	49,116.89	44,780.01	37,997.63
	212,477.58	177,758.80	152,448.39
	196,756.02	155,212.15	145,104.75
	-	802.00	838.92
	10,832.42	10,881.78	11,316.75
	-	-	314.45
	1,580.75	1,842.01	2,011.16
	35.17	46.84	0.18
	244.78	179.46	217.43
	209,449.15	168,964.24	159,803.64
	421,926.73	346,723.05	312,252.03
	54,833.00	64,400.00	37,400.00
	22,830.00	23,083.00	9,000.00
	23,457.33	21,707.52	18,465.09
	2,037.24	3,025.60	2,819.41
	974.09	677.95	652.40
	1,326.36	727.34	755.34
	3,507.55	3,562.17	3,498.61
	831.24	851.71	9,482.17
	69,988.38	-	-
	179,785.20	118,035.29	82,073.02

	2014 12 31	2013 12 31	2012 12 31
	-	93.53	130.91
	-	69,577.30	69,231.30
	-	69,670.84	69,362.21
	179,785.20	187,706.12	151,435.23
	68,656.60	58,656.60	58,656.60
	119,159.64	46,023.64	46,342.02
	8,667.98	8,375.84	8,289.36
	45,657.31	45,960.85	47,528.81
	242,141.53	159,016.92	160,816.80
	421,926.73	346,723.05	312,252.03

2

	2014	2013	2012
	73,684.05	67,888.43	60,865.55
	62,841.93	58,772.98	53,351.21
	906.75	734.61	668.16
	829.88	632.74	712.74
	3,477.06	3,046.35	3,481.99
	8,408.75	7,179.74	7,235.87
	447.83	-253.09	-319.47
“_”	5,539.59	3,054.73	22,885.60
	-158.13	54.73	46.16
“_”	2,311.44	829.83	18,620.66
	611.03	164.73	190.96
	114.86	91.82	34.58
	64.50	41.32	4.28
	24.63	902.74	18,777.04
“_”	2,857.97	37.96	60.15
	-63.46	864.77	18,716.89
“_”	2,921.43	-	-
	2921.43	864.77	18,716.89

3

	2014	2013	2012
	51,322.57	58,473.22	40,447.37
	9,881.65	16,134.35	5,906.36
	61,204.22	74,607.57	46,353.73
	36,797.33	40,542.65	51,199.35
	4,900.60	4,277.60	4,364.42
	2,744.30	2,294.26	2,161.29
	26,341.97	17,621.06	67,291.54
	70,784.20	64,735.58	125,016.59
	-9,579.98	9,872.00	-78,662.86
	-	-	-
	5,697.72	3,000.00	34,590.00
	3.85	4.96	63.76
	-	-	6,787.12
	5,701.57	3,004.96	41,440.88
	308.41	467.56	719.57
	41,800.00	6,441.00	4,000.00
	-	4,067.26	36,322.23
	42,108.41	10,975.81	41,041.79
	-36,406.83	-7,970.85	399.09
	83,136.00	-	-
	59,600.00	82,500.00	47,900.00
	-	-	70,000.00
	-	-	3,450.00
	142,736.00	82,500.00	121,350.00
	72,628.08	55,537.37	37,065.45
	12,592.08	10,615.02	7,767.04
	-	-	1,037.50
	85,220.16	66,152.40	45,869.99

	2014	2013	2012
	57,515.84	16,347.60	75,480.01
	-	-	-
	11,529.03	18,248.75	-2,783.77
	22,944.39	4,695.65	7,479.42
	34,473.42	22,944.39	4,695.65

2012

		2012	
1			
		8,500	85.50%
		2,153	85.50%
		100	85.50%
		1	85.50%
		100	85.50%
		612.5	51.02%
		10	99.91%
2			
	-	-	-

2012

85.50%

100%

2012

51.02%

2012

2012

$$\begin{aligned}
 &= \frac{1}{2} \left[\frac{1}{2} + \frac{1}{2} \right] \\
 &= \frac{1}{2} + \frac{1}{2} \\
 &= \frac{1}{2} - \frac{1}{2} / 100\% \\
 &= \frac{1}{2} \\
 &= \frac{1}{2} \\
 &= \frac{1}{2} + \frac{1}{2} \\
 &= \frac{1}{2}
 \end{aligned}$$

1 2014 12 31

2 6

3 6 2014 12 31

4 6 3.95

5 2014 12 31

	778,420.24	798,920.24	+20,500.00
	200,486.06	200,486.06	0.00

	978,906.30	999,406.30	+20,500.00
	624,473.21	584,973.21	-39,500.00
	16,590.02	76,590.02	+60,000.00
	641,063.85	661,563.85	+20,500.00
	65.49%	66.20%	+0.71%
	97.41%	88.42%	-8.99%
	2.59%	11.58%	-8.99%
	1.25	1.37	+0.12
	0.56	0.64	+0.07
	212,477.58	232,977.58	+20,500.00
	209,449.15	209,449.15	0.00
	421,926.73	442,426.73	+20,500.00
	179,785.20	140,285.20	-39,500.00
	0.00	60,000.00	+60,000.00
	179,785.20	200,285.20	+20,500.00
	42.61%	45.27%	+2.66%
	100.00%	70.04%	-29.96%
	0.00%	29.96%	+29.96%
	1.18	1.66	+0.48
	0.91	1.31	+0.25

2015

2015

6

2015

3.95

3.95

1		2014.07.01-2015.06.30	6.30%	2,500.00
2		2014.06.27-2015.06.26	6.30%	1,500.00
3		2014.08.27-2015.08.26	6.30%	1,000.00
4		2014.07.18-2015.07.17	6.30%	5,000.00
5		2014.08.15-2015.08.14	6.30%	5,500.00
6		2015.03.12-2015.09.12	6.42%	10,000.00
7		2014.07.03-2015.07.01	6.30%	2,000.00
8		2014.09.02-2015.09.01	6.30%	4,000.00
9		2015.03.06-2016.03.04	5.89%	6,000.00
10		2014.05.30-2015.05.29	6.60%	2,000.00
				39,500.00



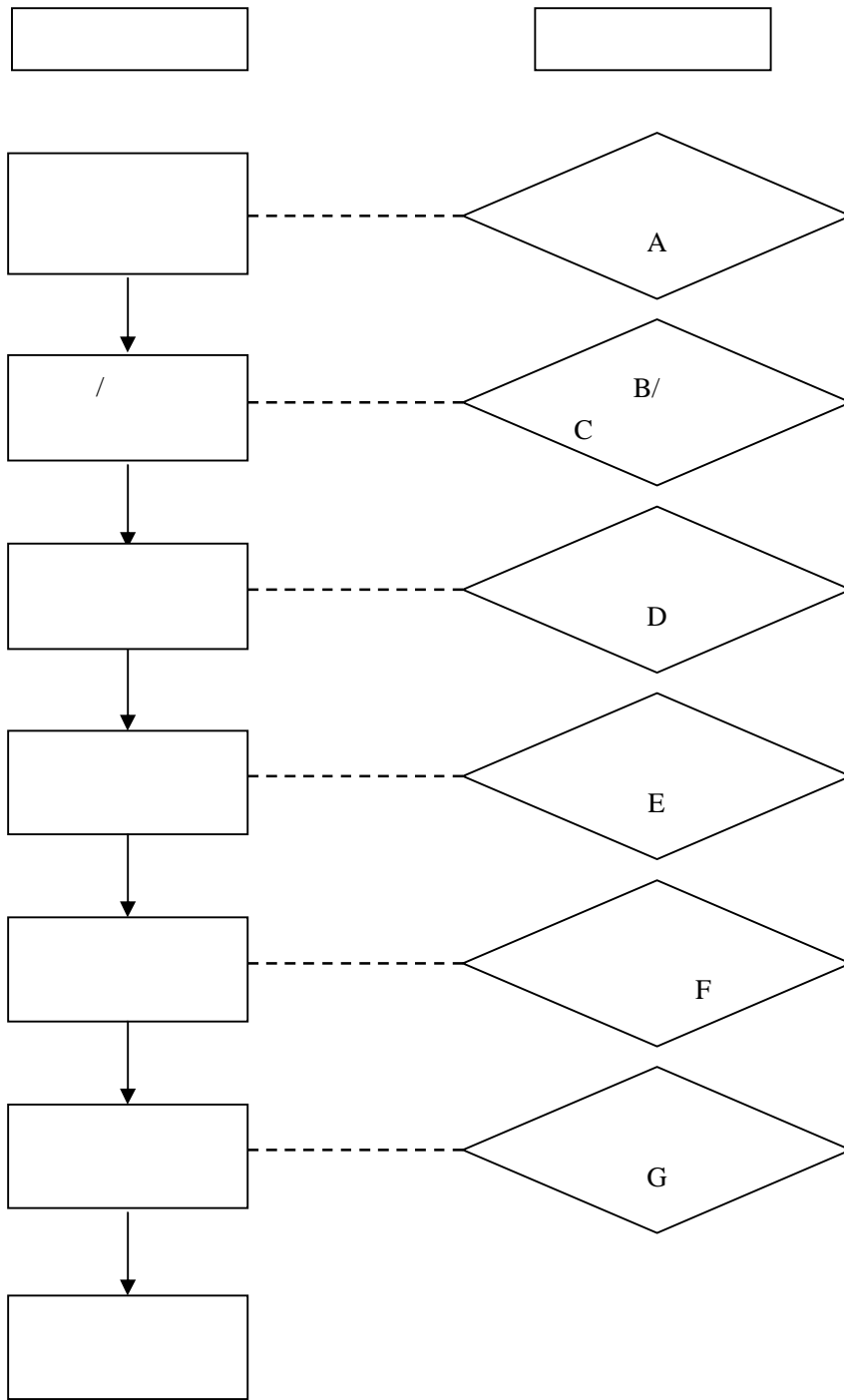
1

30%

85%

95%~98%

1~2



A

B

C

D

E

F

G

1 2

2

	2012	2013	2014		90.35
80.30	104.7		21.47%	-11.12%	30.38%

3

3-5

“

”

“

”



2

5 7

2012 2014

159

15

021-31215599-6857

021-31215599-6870

200233

www.600496.com

458

1702-04

021-68881513

021-68886005

www.ctsec.com

<http://www.sse.com.cn>



（本页无正文，为《长江精工钢结构（集团）股份有限公司公开发行 2015 年公司债券募集说明书摘要》之盖章页）

长江精工钢结构（集团）股份有限公司



2015年7月31日